

Eighth Ward Volunteer Fire Department

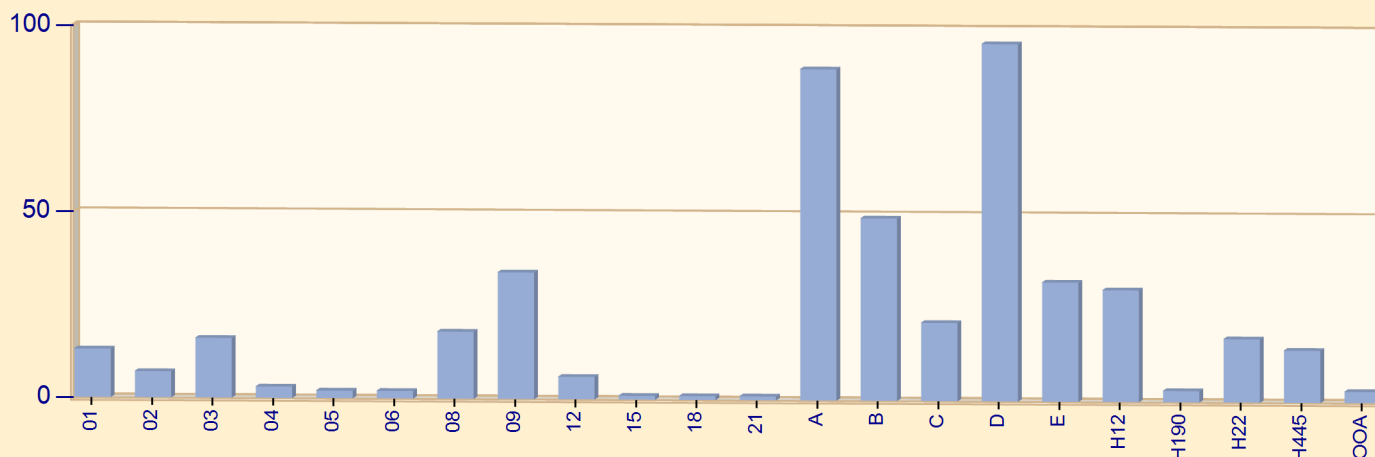
Ponchatoula, LA

This report was generated on 7/17/2021 4:09:50 PM



Incident Type Count per Zone for Date Range

Start Date: 01/01/2021 | End Date: 06/30/2021



ZONES	INCIDENT TYPE	COUNT
01 - Subdivision Bedico Meadows		
	311 - Medical assist, assist EMS crew	2
	321 - EMS call, excluding vehicle accident with injury	11
	<i>Total Incidents for 01 - Subdivision Bedico Meadows:</i>	13
02 - Subdivision Bedico Trace		
	321 - EMS call, excluding vehicle accident with injury	3
	511 - Lock-out	1
	553 - Public service	1
	733 - Smoke detector activation due to malfunction	1
	736 - CO detector activation due to malfunction	1
	<i>Total Incidents for 02 - Subdivision Bedico Trace:</i>	7
03 - Subdivision Coves of the Highlands		
	111 - Building fire	1
	321 - EMS call, excluding vehicle accident with injury	7
	611 - Dispatched & cancelled en route	2
	622 - No incident found on arrival at dispatch address	1
	733 - Smoke detector activation due to malfunction	1
	735 - Alarm system sounded due to malfunction	1
	743 - Smoke detector activation, no fire - unintentional	2
	744 - Detector activation, no fire - unintentional	1
	<i>Total Incidents for 03 - Subdivision Coves of the Highlands:</i>	16

Zone information is defined on the Basic Info 3 screen of an incident.
Only REVIEWED incidents included.



ZONES	INCIDENT TYPE	COUNT
04 - Subdivision Villas of Bocage		
	321 - EMS call, excluding vehicle accident with injury	3
	<i>Total Incidents for 04 - Subdivision Villas of Bocage:</i>	3
05 - Subdivision East Bedico Creek		
	321 - EMS call, excluding vehicle accident with injury	2
	<i>Total Incidents for 05 - Subdivision East Bedico Creek:</i>	2
06 - Subdivision Silver Hill		
	311 - Medical assist, assist EMS crew	1
	321 - EMS call, excluding vehicle accident with injury	1
	<i>Total Incidents for 06 - Subdivision Silver Hill:</i>	2
08 - Subdivision The Landings		
	320 - Emergency medical service, other	1
	321 - EMS call, excluding vehicle accident with injury	3
	611 - Dispatched & cancelled en route	2
	733 - Smoke detector activation due to malfunction	4
	743 - Smoke detector activation, no fire - unintentional	6
	744 - Detector activation, no fire - unintentional	1
	745 - Alarm system activation, no fire - unintentional	1
	<i>Total Incidents for 08 - Subdivision The Landings:</i>	18
09 - Subdivision Cypress Reserve		
	311 - Medical assist, assist EMS crew	1
	321 - EMS call, excluding vehicle accident with injury	10
	357 - Extrication of victim(s) from machinery	1
	412 - Gas leak (natural gas or LPG)	1
	611 - Dispatched & cancelled en route	2
	700 - False alarm or false call, other	2
	733 - Smoke detector activation due to malfunction	3
	735 - Alarm system sounded due to malfunction	5
	736 - CO detector activation due to malfunction	1
	740 - Unintentional transmission of alarm, other	2
	743 - Smoke detector activation, no fire - unintentional	4
	745 - Alarm system activation, no fire - unintentional	2
	<i>Total Incidents for 09 - Subdivision Cypress Reserve:</i>	34
12 - Subdivision The Haven		

Zone information is defined on the Basic Info 3 screen of an incident.
Only REVIEWED incidents included.



ZONES	INCIDENT TYPE	COUNT
	321 - EMS call, excluding vehicle accident with injury	4
	511 - Lock-out	1
	733 - Smoke detector activation due to malfunction	1
	<i>Total Incidents for 12 - Subdivision The Haven:</i>	6
15 - Subdivision Villas of Bedico Creek		
	321 - EMS call, excluding vehicle accident with injury	1
	<i>Total Incidents for 15 - Subdivision Villas of Bedico Creek:</i>	1
18 - Subdivision Emerald Estates		
	321 - EMS call, excluding vehicle accident with injury	1
	<i>Total Incidents for 18 - Subdivision Emerald Estates:</i>	1
21 - Subdivision Autumn Trace (Washley)		
	311 - Medical assist, assist EMS crew	1
	<i>Total Incidents for 21 - Subdivision Autumn Trace (Washley):</i>	1
A - N of Hwy22; S of I-12; Hwy 445 to Parish Line		
	111 - Building fire	3
	118 - Trash or rubbish fire, contained	1
	142 - Brush or brush-and-grass mixture fire	1
	143 - Grass fire	1
	151 - Outside rubbish, trash or waste fire	3
	311 - Medical assist, assist EMS crew	4
	321 - EMS call, excluding vehicle accident with injury	57
	322 - Motor vehicle accident with injuries	2
	323 - Motor vehicle/pedestrian accident (MV Ped)	1
	324 - Motor vehicle accident with no injuries.	2
	510 - Person in distress, other	1
	511 - Lock-out	2
	553 - Public service	1
	554 - Assist invalid	4
	611 - Dispatched & cancelled en route	1
	733 - Smoke detector activation due to malfunction	1
	735 - Alarm system sounded due to malfunction	2
	743 - Smoke detector activation, no fire - unintentional	1
	744 - Detector activation, no fire - unintentional	1
	<i>Total Incidents for A - N of Hwy22; S of I-12; Hwy 445 to Parish Line:</i>	89
B - South of Hwy 22		
	111 - Building fire	1

Zone information is defined on the Basic Info 3 screen of an incident.
Only REVIEWED incidents included.



ZONES	INCIDENT TYPE	COUNT
	143 - Grass fire	2
	311 - Medical assist, assist EMS crew	1
	320 - Emergency medical service, other	1
	321 - EMS call, excluding vehicle accident with injury	27
	322 - Motor vehicle accident with injuries	2
	323 - Motor vehicle/pedestrian accident (MV Ped)	1
	331 - Lock-in (if lock out , use 511)	1
	351 - Extrication of victim(s) from building/structure	1
	365 - Watercraft rescue	1
	412 - Gas leak (natural gas or LPG)	1
	445 - Arcing, shorted electrical equipment	1
	510 - Person in distress, other	1
	520 - Water problem, other	1
	553 - Public service	1
	554 - Assist invalid	1
	600 - Good intent call, other	2
	700 - False alarm or false call, other	1
	711 - Municipal alarm system, malicious false alarm	1
	733 - Smoke detector activation due to malfunction	1
	<i>Total Incidents for B - South of Hwy 22:</i>	49
C - N of Hwy 22; S of Hwy 190; Hwy 445 to Tangi River		
	132 - Road freight or transport vehicle fire	1
	311 - Medical assist, assist EMS crew	3
	321 - EMS call, excluding vehicle accident with injury	14
	553 - Public service	1
	600 - Good intent call, other	1
	721 - Bomb scare - no bomb	1
	<i>Total Incidents for C - N of Hwy 22; S of Hwy 190; Hwy 445 to Tangi River:</i>	21
D - N of I-12; E of Hwy 445		
	111 - Building fire	3
	118 - Trash or rubbish fire, contained	1
	137 - Camper or recreational vehicle (RV) fire	2
	143 - Grass fire	2
	151 - Outside rubbish, trash or waste fire	1
	311 - Medical assist, assist EMS crew	6
	320 - Emergency medical service, other	2
	321 - EMS call, excluding vehicle accident with injury	57

Zone information is defined on the Basic Info 3 screen of an incident.
Only REVIEWED incidents included.



ZONES	INCIDENT TYPE	COUNT
	322 - Motor vehicle accident with injuries	1
	324 - Motor vehicle accident with no injuries.	2
	331 - Lock-in (if lock out , use 511)	1
	411 - Gasoline or other flammable liquid spill	1
	412 - Gas leak (natural gas or LPG)	2
	511 - Lock-out	1
	542 - Animal rescue	1
	553 - Public service	2
	611 - Dispatched & cancelled en route	4
	700 - False alarm or false call, other	1
	733 - Smoke detector activation due to malfunction	2
	735 - Alarm system sounded due to malfunction	1
	741 - Sprinkler activation, no fire - unintentional	1
	744 - Detector activation, no fire - unintentional	1
	745 - Alarm system activation, no fire - unintentional	1
	<i>Total Incidents for D - N of I-12; E of Hwy 445:</i>	96
E - N of Hwy 190; W of Hwy 445		
	141 - Forest, woods or wildland fire	1
	321 - EMS call, excluding vehicle accident with injury	26
	553 - Public service	1
	611 - Dispatched & cancelled en route	3
	715 - Local alarm system, malicious false alarm	1
	<i>Total Incidents for E - N of Hwy 190; W of Hwy 445:</i>	32
H12 - ON I-12		
	131 - Passenger vehicle fire	4
	141 - Forest, woods or wildland fire	1
	150 - Outside rubbish fire, other	1
	320 - Emergency medical service, other	1
	321 - EMS call, excluding vehicle accident with injury	2
	322 - Motor vehicle accident with injuries	9
	324 - Motor vehicle accident with no injuries.	7
	400 - Hazardous condition, other	1
	611 - Dispatched & cancelled en route	3
	622 - No incident found on arrival at dispatch address	1
	<i>Total Incidents for H12 - ON I-12:</i>	30
H190 - ON Hwy 190		

Zone information is defined on the Basic Info 3 screen of an incident.
Only REVIEWED incidents included.



ZONES	INCIDENT TYPE	COUNT
	321 - EMS call, excluding vehicle accident with injury	1
	322 - Motor vehicle accident with injuries	2
	<i>Total Incidents for H190 - ON Hwy 190:</i>	3
H22 - ON Hwy 22		
	143 - Grass fire	1
	321 - EMS call, excluding vehicle accident with injury	3
	322 - Motor vehicle accident with injuries	8
	323 - Motor vehicle/pedestrian accident (MV Ped)	1
	324 - Motor vehicle accident with no injuries.	1
	444 - Power line down	1
	622 - No incident found on arrival at dispatch address	1
	744 - Detector activation, no fire - unintentional	1
	<i>Total Incidents for H22 - ON Hwy 22:</i>	17
H445 - ON Hwy445		
	122 - Fire in motor home, camper, recreational vehicle	1
	131 - Passenger vehicle fire	1
	322 - Motor vehicle accident with injuries	8
	324 - Motor vehicle accident with no injuries.	4
	<i>Total Incidents for H445 - ON Hwy445:</i>	14
OOA - Out of Area		
	111 - Building fire	2
	356 - High-angle rescue	1
	<i>Total Incidents for OOA - Out of Area:</i>	3
Total Count for all Zone:		458

Zone information is defined on the Basic Info 3 screen of an incident.
Only REVIEWED incidents included.

